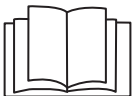
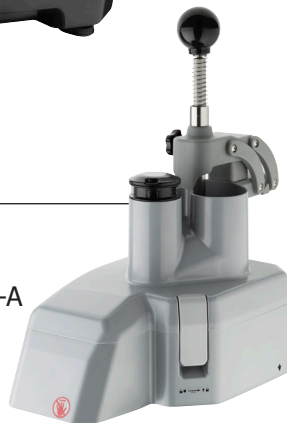


apuro

5 Litre Bowl Cutter Instruction manual



Sold separately,
purchase code DN630-A



Caution: Read the instructions before using the appliance.

**Model:
DM070-A (+ DN630-A)**

Safety Instructions

The cutter is a dangerous appliance and must only be used by trained personnel in accordance with these instructions.

Intended for commercial and indoor use only!

DO NOT process items that this machine is not designed for to avoid any property damage or personal injury.

- Position on a flat, stable surface.
- A service agent/qualified technician should carry out installation and any repairs if required. Do not remove any components on this product.
- Consult Local and National Standards to comply with the following:
 - Health and Safety at Work Legislation
 - Fire Precautions
 - IEE Wiring Regulations
 - Building Regulations
- DO NOT use jet/pressure washers to clean the appliance.
- DO NOT immerse the motor base in water.
- DO NOT bypass any safety interlocks on the appliance.
- DO NOT attempt to cut frozen food with the appliance.
- Always switch off and disconnect the power supply to the appliance before putting on or taking off parts, when not in use, before cleaning and maintenance and storage.
- Be extremely careful when handling blades, especially when assembling/disassembling and cleaning. **Blades are very sharp.**
- DO NOT use with loose or damaged blades.

- Only use original Apuro parts and attachments with this appliance, or your guarantee will be invalidated.
- Leave at least 15mm clearance around the appliance for ventilation during use.
- ALWAYS keep hands, hair and clothing away from the moving parts.
- NEVER leave the appliance unattended when in use.
- DO NOT move while in use. Switch off and unplug before appliance transporting.
- This appliance is not intended to be operated by means of an external timer or separate remote-control system.
- Keep all packaging away from children. Dispose of the packaging in accordance to the regulations of local authorities.
- If the power cord is damaged, it must be replaced by an Apuro agent or a recommended qualified technician in order to avoid a hazard.
- This appliance is not intended for use by persons with reduced physical, sensory or mental capabilities, or lack of experience and knowledge.
- This appliance must not be used by children under any circumstances.
- Keep the appliance and its cord out of reach of children.
- DO NOT let cord hang over edge of table or counter, or touch hot surfaces.
- Apuro recommend that this appliance should be periodically tested (at least annually) by a Competent Person. Testing should include, but not be limited to: Visual Inspection, Polarity Test, Earth Continuity, Insulation Continuity and Functional Testing.

Introduction

Please take a few moments to carefully read through this manual. Correct maintenance and operation of this machine will provide the best possible performance from your Apuro product.

This machine is designed for vegetable preparation in restaurants, canteens and similar catering establishments.

Apuro will not accept liability for product failures in the event that:

- The instructions in this manual have not been followed correctly.
- Unqualified or unauthorized personnel have adjusted the appliance.
- The appliance has not been handled and cleaned correctly.
- The appliance has been used for a purpose for which it was not intended.

Installation

Remove the appliance from the packaging. While positioning on a worktop, ensure the feet are level to reduce vibration during operation.

Pack Contents

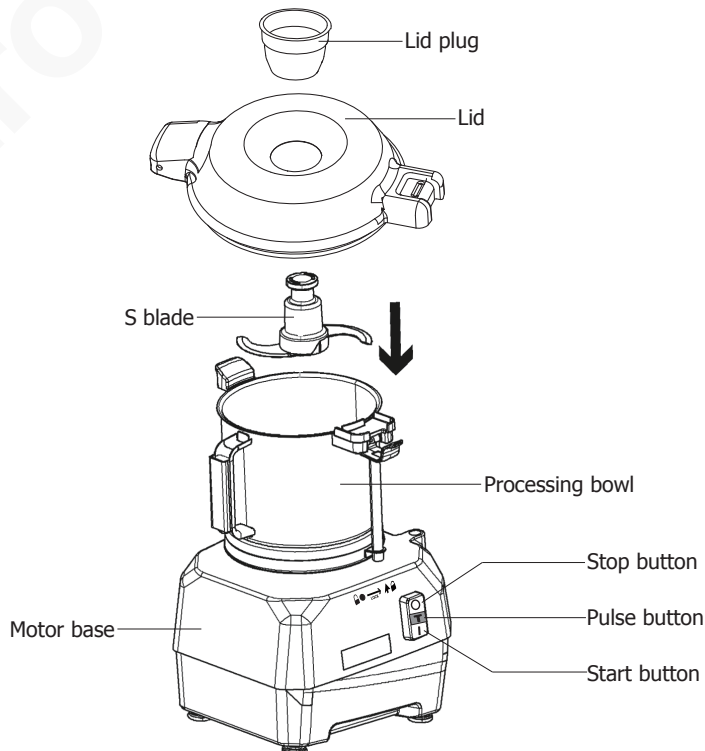
The following is included:

- Motor base with shaft pre-mounted
- Processing bowl
- Lid
- Lid plug
- S blade
- Instruction manual
- Veg Prep Attachment for DM070-A (sold separately at purchase code DN630-A)

Apuro prides itself on quality and service, ensuring that at the time of unpacking the contents are supplied fully functional and free of damage.

Should you find any damage as a result of transit, please contact your Apuro dealer immediately.

Assembly



Before assembly, ensure to:



- Switch off and disconnect the appliance from the power supply.
- Clean all parts that come into contact with food with warm soapy water. For details, refer to section "Cleaning, care & maintenance".
- Never immerse the motor base in water, nor rinse it under running water.

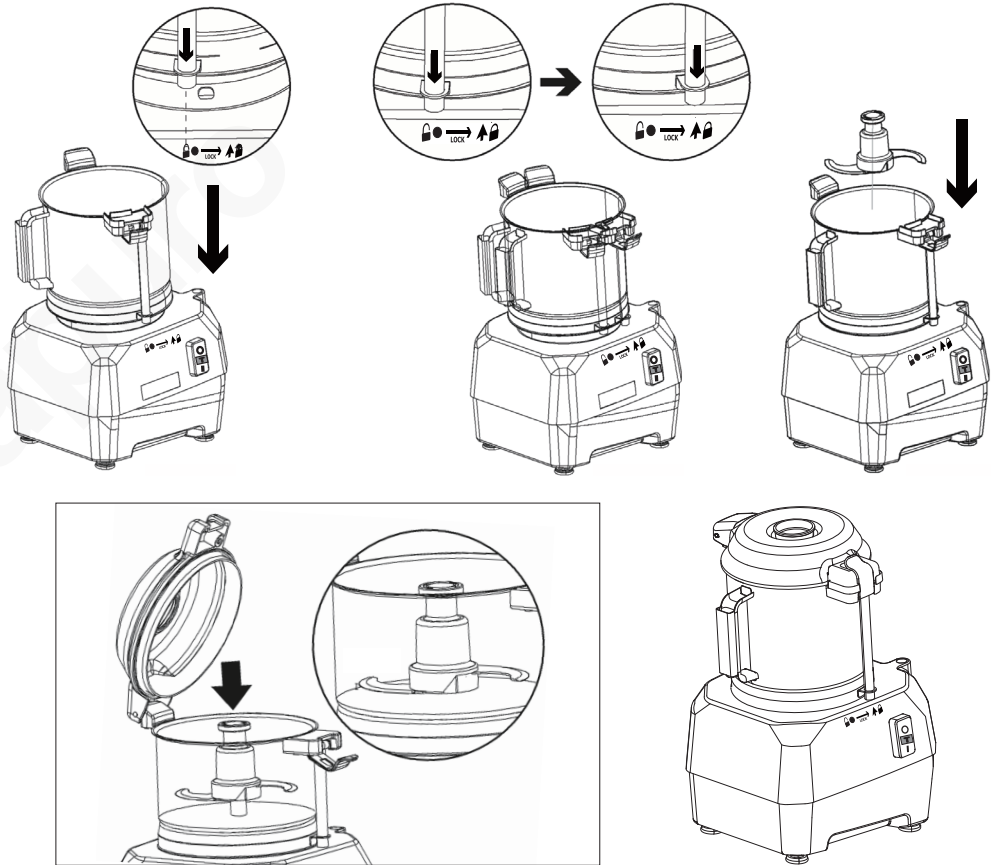
Warning:

Apuro accept no responsibility for property damage or personal injury caused by incorrect assembly/disassembly.

Cutting blades are sharp! Handle with care!

Equipped with a safety interlock system, the appliance will not start before the parts are securely mounted.

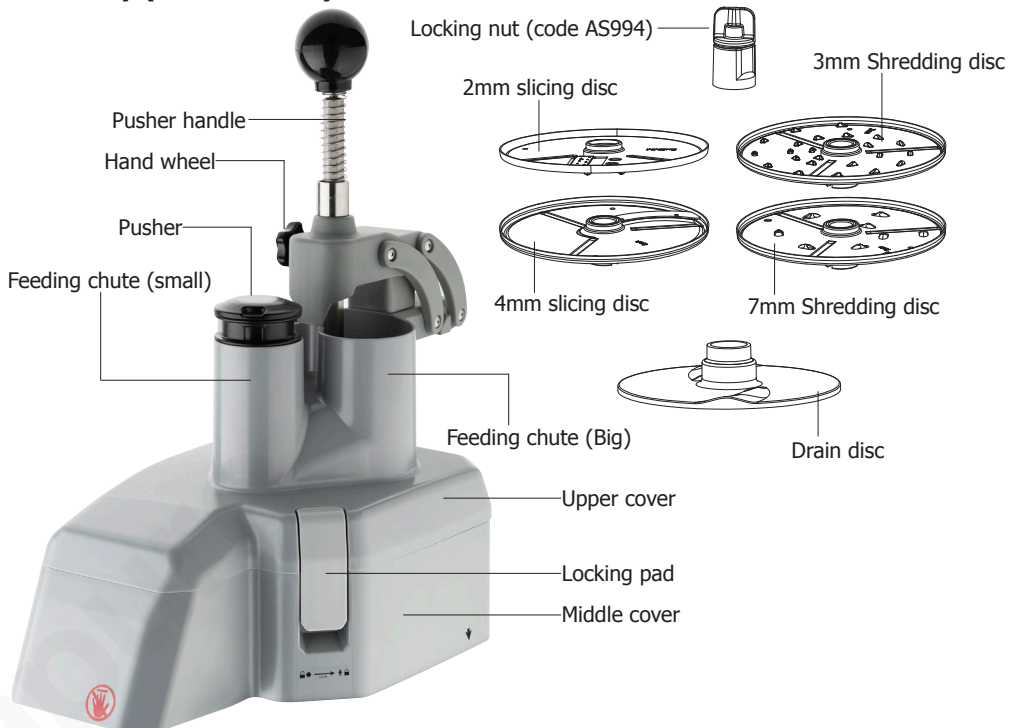
1. Place the bowl onto the motor shaft, and align the magnetic bar with the marking . Then turn the bowl anti-clockwise to lock it into place (aligned with the arrow marking ).
2. Locate the S blade onto the shaft (Ensure to remove the plastic protective sleeve first).
3. Put food in, then secure the flat lid.
4. Insert the lid plug, which can be used to add ingredients during operation.



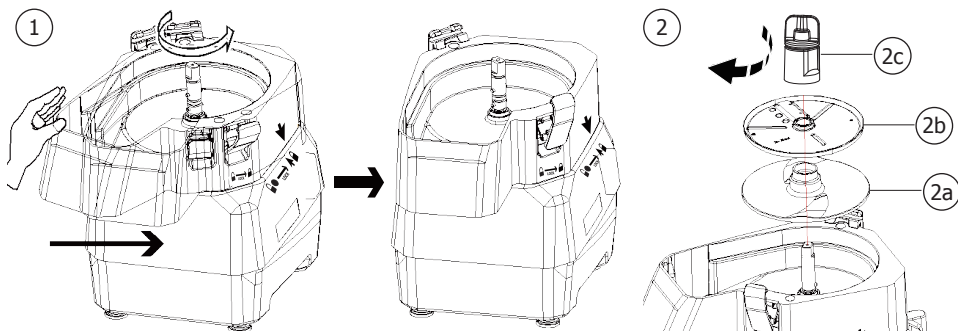
Instructions for DN630-A:

Warning: DO NOT place hands in either food chute.
DO NOT feed food in to the appliance by hand. ALWAYS use the pusher or handle supplied.

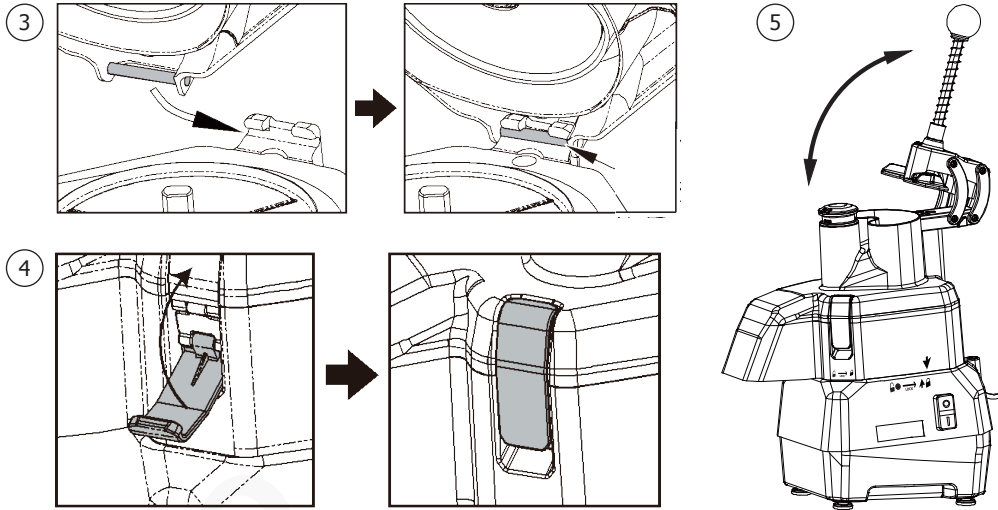
Assembly (for DN630-A)



1. Place the middle cover onto the motor shaft of unit DM070-A, and turn it as arrow direction to lock in place (fig. 1).
2. Mount the drain disc and cutting disc onto the shaft, ensuring the flat side of the cutting disc is facing upward. Mount the locking nut and turn clockwise to lock the cutting disc, otherwise the disc will come loose and damage the appliance (fig. 2).



3. Mount the upper cover onto the middle cover, ensuring the pin of the former is locked inside the catch of the latter (fig. 3).
4. Secure the upper cover and the middle cover using the locking pad (fig. 4).
5. Loosen the handwheel and lift the handle up and down to ensure the appliance is assembled securely (fig. 5).



6. Place the vegetables in the feeding chute. Then lower the pusher handle fully.
7. Place a container beneath the cutter mouth to collect the cut vegetables. The appliance is now ready for use.

Changing the cutting disc (for DN630-A)

Warning: The blades on the cutting disc are sharp. Handle with care!

1. Turn off and disconnect the appliance from the mains power supply.
2. Release the locking pad and remove the upper cover.
3. Turn the locking nut anti-clockwise to remove first. Turn the cutting disc anti-clockwise and remove. This may require a sharp tap to free it from the shaft.
4. Slot the new disc in place. Turn if necessary to drop the disc in place. Mount the locking nut in place.

Note: Ensure the appliance is clean and free from food debris when changing disc to ensure the disc can be securely fitted.

5. Locate the upper cover and pusher handle consecutively in place.

Tip: When in use, press down on the pusher handle or the food pusher. As the vegetables are cut, they will be ejected from the cutter mouth.

Caution: NEVER use the pusher for the big feeding chute, as this may lead to appliance damage or personal injury.

Operation

1. Connect the appliance to the mains power supply.
2. Press the Start button (**I**) to turn on.
3. **Pulse function:** Press down and hold the pulse button (**T**) to start. Release to stop.

Note: The pulse function is only suitable for the processing bowl, not for the DN630-A vegetable preparation attachment.

4. Once all food are cut, press the Stop button (**O**) to turn Off. Disconnect from power supply and let the motor cool down.

Cleaning, Care & Maintenance

- **Always turn off and disconnect the appliance from the power supply before cleaning.**
- Allow to cool before cleaning.
- Let the motor come to a complete stop before disassembly and cleaning.
- Remove all food debris.
- Never immerse the motor base in water, nor rinse it under running water. Clean the surface using a damp cloth.
- Use warm, soapy water and a damp cloth to clean all removable parts.
- Dry all parts well and re-assemble.
- Periodically lubricate the shaft with some vegetable oil.

Troubleshooting

A qualified technician must carry out repairs if required.

Fault	Probable Cause	Solution
The unit is not working	The unit is not switched on	Check the unit is plugged in correctly and switched on
	Plug or lead is damaged	Replace plug or lead
	Mains power supply fault	Check mains power supply
Unit does not work after assembled	Safety interlock system is functioning due to improper assembling	Assemble the appliance correctly, referring to section "Assembly"
Appliance stops working suddenly	Overheating protection is activated due to overload or short circuit	<ol style="list-style-type: none"> 1. Turn off and disconnect from power supply 2. Empty the bowl and allow cooling down for about 10 minutes 3. Restart the appliance
Appliance stops operation suddenly (for DN630-A only)	The appliance is equipped with 2 safety micro switches. These switches, during operation, will cut off the power supply under 2 conditions: <ul style="list-style-type: none"> • The pusher handle is lifted backward • The cover is opened 	<ul style="list-style-type: none"> • If Power OFF due to handle lifting, simply lower the handle to restart • If Power OFF due to cover opening, close the cover in place then press Start button to restart.

Technical Specifications

Note: Due to our continuous improvement process, the product specifications are subject to change without notice.

Model	Voltage	Power	Current	Bowl capacity	Speed (RPM)	Dimensions H x W x D mm	Net Weight
DM070-A	220-240V~ 50Hz	735W	3.2A	5L	1500	470 x 285 x 346	14.65kg
DN630-A	/	/	/	/	/	546.8 x 238.3 x 432.8	4.71kg

Electrical Wiring

The appliance is supplied with a plug as per the below table (the correct current to be selected depending on the appliance).

Model	Region	Plug standard	Current rating(s)	Voltage
AB123-A	Australia & New Zealand	AS/NZS 3112	10A	230V~, 50Hz

The plug is to be connected to a suitable mains socket.

This appliance must be earthed.



If in doubt consult a qualified electrician.

Electrical isolation points must be kept clear of any obstructions. In the event of any emergency disconnection being required they must be readily accessible.

Compliance

The product must not be disposed of as household waste. To help prevent possible harm to human health and/or the environment, the product must be disposed of in an approved and environmentally safe recycling process. For further information on how to dispose of this product correctly, contact the product supplier, or the local authority responsible for waste disposal in your area.

Apuro parts have undergone strict product testing in order to comply with regulatory standards and specifications set by international, independent, and federal authorities.



Apuro products have been approved to carry the following symbol:

All rights reserved. No part of these instructions may be produced or transmitted in any form or by any means, electronic, mechanical, photocopying, recording or otherwise, without the prior written permission of Apuro. Every effort is made to ensure all details are correct at the time of going to press, however, Apuro reserve the right to change specifications without notice.

DECLARATION OF CONFORMITY

- Conformanceverklaring • Déclaration de conformité • Konformitätserklärung • Dichiarazione di conformità •
- Declaración de conformidad • Erklæring om samsvar

Equipment Type • Uitrustingstype • Type d'équipement • Gerädetyp • Tipo di apparecchiatura • Tipo de equipo • Utstyrstype	Model • Modèle • Modell • Modello • Modelo • Modell
Large 5 Litre Bowl Cutter	DM070-A
Application of Territory Legislation & Council Directives(s) Toepassing van Europese Richtlijn(en) • Application de la/des directive(s) du Conseil • Anwendbare EU-richtlinie(n) • Applicazione delle Direttive • Aplicación de la(s) directiva(s) del consejo • Anvendelse av territoriell lovgivning og rådsdirektiv(er)	Electrical Safety EN 1678:1998+A1:2010 EN 12852:2001+A1:2010 EN ISO 12100:2010 EN 60204-1:2018 Electro-Magnetic Compatibility (EMC) EN IEC 55014-1: 2021 EN IEC 55014-2: 2021 EN IEC 61000-3-2: 2019+A1:2021 EN 61000-3-3: 2013+A1:2019+A2:2021
Manufacturer Name • Naam fabrikant • Nom du fabricant • Name des Herstellers • Nome del fabbricante • Nombre del fabricante • Produsentens navn	Apuro

I, the undersigned, hereby declare that the equipment specified above conforms to the above Territory Legislation, Directive(s) and Standard(s).

Ik, de ondergetekende, verklaar hierbij dat de hierboven gespecificeerde uitrusting goedgekeurd is volgens de bovenstaande Richtlijn(en) en Standaard(en).

Je soussigné, confirme la conformité de l'équipement cité dans la présente à la / aux Directive(s) et Norme(s) ci-dessus

Ich, der/die Unterzeichnende, erkläre hiermit, dass das oben angegebene Gerät der/den oben angeführten Richtlinie(n) und Norm(en) entspricht.

Il sottoscritto dichiara che l'apparecchiatura di sopra specificata è conforme alle Direttive e agli Standard sopra riportati.

El abajo firmante declara por la presente que el equipo arriba especificado está en conformidad con la(s) directiva(s) y estándar(es) arriba mencionadas.

Undertegnede erklærer herved at utstyret som er spesifisert ovenfor, er i samsvar med ovennevnte territoriell lovgivning, direktiv(er) og standard(er).

Date • Data • Date • Datum •
Data • Fecha • Dato

Signature • Handtekening •
Signature • Unterschrift Firma •
Firma • Signatur

Full Name • Volledige naam • Nom
et prénom • Vollständiger Name •
Nome completo • Nombre complete
• Fullt navn

Position • Functie • Fonction •
Position • Qualifica • Posición •
Posisjon

Manufacturer Address • Adres
fabrikant • Adresse du fabricant •
Adresse des Herstellers • Indirizzo del
fabbricante • Dirección del fabricante
• Produsentens adresse

10th Mar 2026

Signed by:
Ashley Hooper
AB6DB7858FFB441...

Ashley Hooper

Group Head of Product Quality & Compliance

15 Badgally Road, Campbelltown NSW 2560





DM070-A (+DN630-A)_A5_v4_2026/03/17